

Panel-Loc Plus™

Wall and Roof Panel



Superior *durability* with an attractive appearance

Panel-Loc Plus™ provides superior durability by adding a striation on top of the rib, giving it even more strength and protection against leaking. Available in 3 options, Panel-Loc Plus™ gives residential, agricultural, and light commercial projects the protection of steel with an attractive appearance.

Panel-Loc Plus™ from Central States® has become the standard for excellence in the industry.

- Employs a drain channel that guards against wind, rain, and snow; minimizing leaks.
- Wide fastening surface for easy application.
- Unique lap groove hides the overlap, giving a smooth, clean appearance.



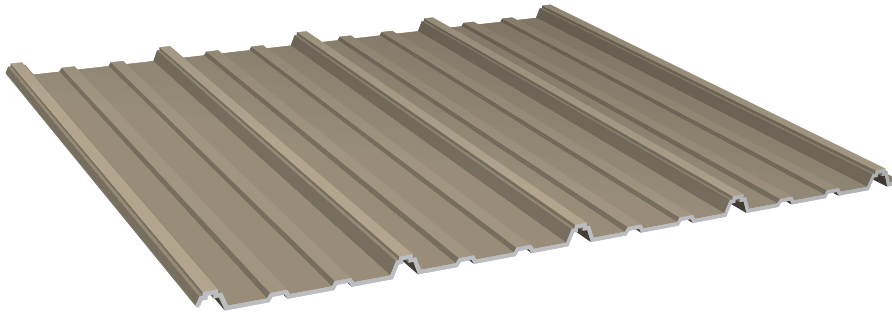
RECOMMENDED 3:12 PITCH AND ABOVE	29 OR 26 GAUGE	36" OVERALL COVERAGE	3/4" MAXIMUM RIB HEIGHT
--	---------------------------------------	-----------------------------------	--------------------------------------



WWW.CENTRALSTATESMFG.COM

Copyright © 2015, Central States Manufacturing, Inc., All Rights Reserved. Galvalume® is a registered trademark of BIEC International, Inc.

CEFLYR_PLP_151203



Choose a *panel quality* that works best for your project and budget.

For a small amount more upgrade to

Ultra
26 Gauge

Prime
29 Gauge

Thrifty
29 Gauge

The industry leader

Least expensive option

PREMIUM OPTION

	Ultra 26 Gauge	Prime 29 Gauge	Thrifty 29 Gauge
CENTRALGUARD® PROTECTION	Yes	Yes	No
FADE RESISTANCE	40% More Resistance than Thrifty	40% More Resistance Than Thrifty	Basic Resistance
DENT RESISTANCE	223% More Resistance than Thrifty	40% More Resistance Than Thrifty	Basic Resistance
RUST RESISTANCE	135% More Coating than Thrifty	135% More Coating than Thrifty	Basic Coating
WARRANTY	20 Year Rust-Through 30 Year Chalk & Fade 40 Year Paint Adhesion	20 Year Rust-Through 30 Year Chalk & Fade 40 Year Paint Adhesion	NO Rust-Through NO Chalk & Fade 20 Year Paint Adhesion



SPECIFICATIONS

ULTRA AND PRIME

GAUGE

Ultra 26ga | Prime 29ga

STEEL THICKNESS

Ultra 0.0185" | Prime 0.0150"

PAINT THICKNESS

Top coat paint: .80 mils
Top coat primer: .20 mils
Bottom coat backer: .35 mils
Bottom coat primer: .35 mils

TOTAL THICKNESS

Ultra 0.0202" | Prime 0.0167"

RUST PROTECTANT SUBSTRATE

Galvalume® AZ55, acrylic bare
Galvalume® AZ50, painted

STEEL STRENGTH

80,000 PSI min

PAINT SYSTEM

CentralGuard®, powered by Valspar®

WARRANTY

40 yr paint adhesion
30 yr chalk and fade
20 yr Galvalume® perforation warranty

TESTING & APPROVALS

TESTING

TAS 100-95 Wind Driven Rain Test
TAS 125-03 Uplift Resistance Test, 29 gauge
UL580 Uplift Resistance Test, 29 gauge
ASTM-E455 Diaphragm Shear Standard Test, 26 gauge
ASTM-E455 Diaphragm Shear Standard Test, 29 gauge

APPROVALS

UL2218 UL Approval, Impact Resistance
UL580 UL Approval, Uplift Resistance
UL790 UL Approval, Fire Resistance, Class A
RC-325 Texas Windstorm Approval, 29 gauge over wood purlins
RC-326 Texas Windstorm Approval, 29 gauge over decking
FL14026.2 Florida Approval, Roof Panel over 15/32" Plywood
FL14026.3 Florida Approval, Roof Panel over 15/32" Plywood (NON-HVHZ)
FL14026.4 Florida Approval, Panel over 2X4's (NON-HVHZ)

For more information visit
www.AllMetalNotEqual.com